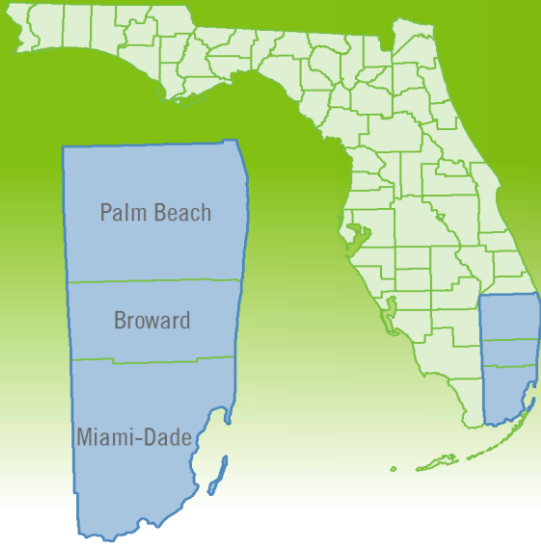


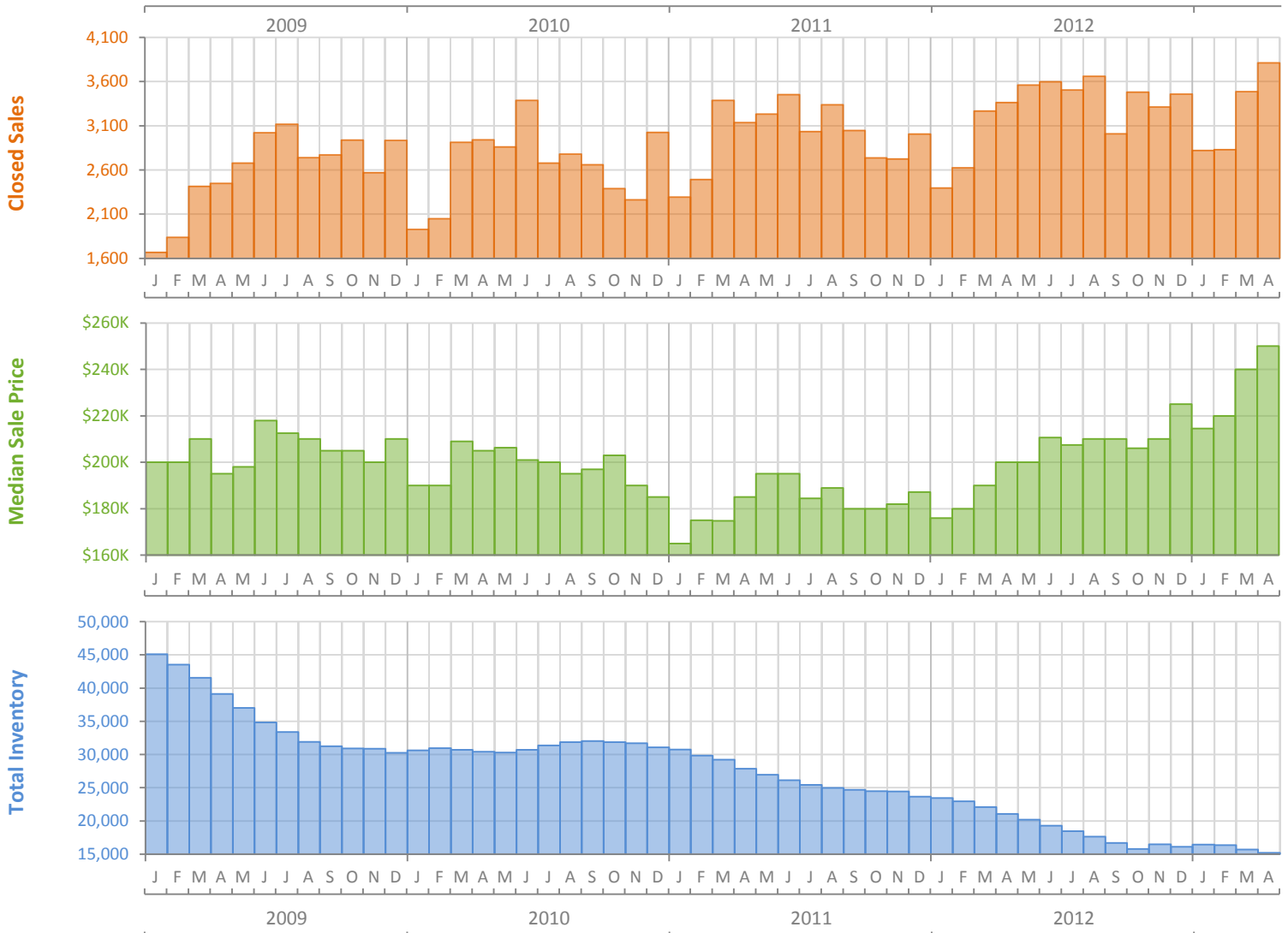
Monthly Market Summary - April 2013

Single Family Homes

Miami-Fort Lauderdale-Pompano Beach MSA



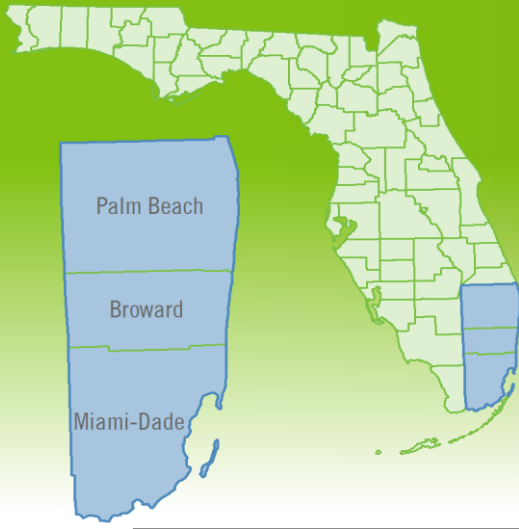
	April 2013	April 2012	Percent Change Year-over-Year
Closed Sales	3,813	3,364	13.3%
Cash Sales	1,796	1,518	18.3%
New Pending Sales	6,322	5,106	23.8%
New Listings	6,295	5,524	14.0%
Median Sale Price	\$250,000	\$200,000	25.0%
Average Sale Price	\$403,450	\$354,774	13.7%
Median Days on Market	54	63	-14.3%
Avg. Percent of Original List Price Received	94.2%	91.0%	3.5%
Pending Inventory	15,401	(No Data)	N/A
Inventory (Active Listings)	15,219	21,077	-27.8%
Months Supply of Inventory	4.5	7.0	-35.5%



Monthly Distressed Market Summary - April 2013

Single Family Homes

Miami-Fort Lauderdale-Pompano Beach MSA



		April 2013	April 2012	Percent Change Year-over-Year
Traditional	Closed Sales	2,695	2,059	30.9%
	Median Sale Price	\$292,000	\$255,000	14.5%
Foreclosure/REO	Closed Sales	413	565	-26.9%
	Median Sale Price	\$158,025	\$128,100	23.4%
Short Sale	Closed Sales	705	742	-5.0%
	Median Sale Price	\$158,000	\$151,500	4.3%

